

Farm Distribution Center

FDC

The FDC Farm Distribution Center is a free standing, all encompassing, pad mount enclosure approved for use by local power utility and used primarily for power distribution in farms. Factory wired secondary lugs enable ease of multiple cable connections for larger sized wires. The weather proof design is ideal for outdoor use. Standard PC101 Grey powder coat paint provides a durable finish.

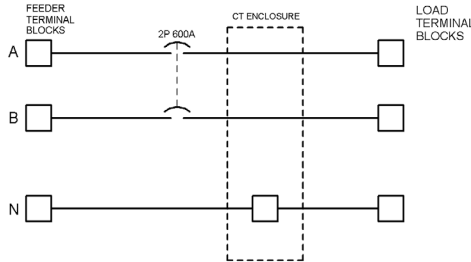


Features/Specifications:

- Steel construction
- CSA Type 3R rated
- Padlockable 3-point handle
- Service entrance rated main breaker with lock off
- Ground bar with lugs for grounding circuits
- Utility approved CT Enclosure
- Complete factory wiring to line & load termination lugs
- Louvers with bug screen
- Pad mount design
- Removable lifting ears
- PC101 Grey powder coat finish

Optional Features:

- Main Lugs Only breaker panel
- Sub-breakers as required
- Meter base
- Heater & thermostat
- Custom powder coat colours



BUSSING OPTION - PRE-DRILLED AND TAPPED BUS CONNECTION FOR CT'S

PART NUMBER	AMP	PHASE	VOLTAGE	HEIGHT	WIDTH	DEPTH
FDC4-B	400	1	120/240	79"	66"	20"
FDC6-B	600	1	120/240	79"	66"	20"
FDC8-B	800	1	120/240	86"	72"	20"
FDC10-B	1000	1	120/240	86"	86"	20"
FDC4-3-B	400	3	347/600*	86"	86"	20"
FDC6-3-B	600	3	347/600*	86"	86"	20"
FDC8-3-B	800	3	347/600*	86"	86"	20"
FDC10-3-B	1000	3	347/600*	86"	86"	20"

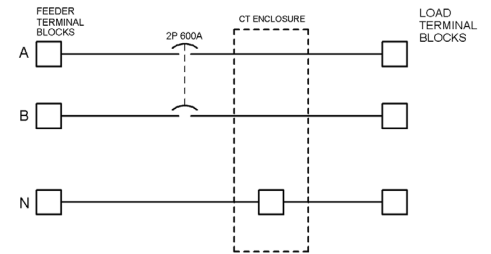
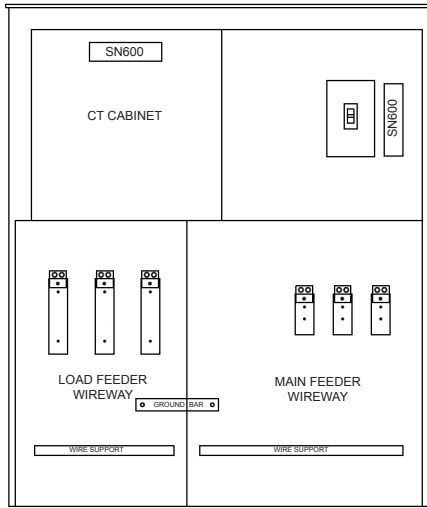
* Also approved for use with 120/208V

PART NUMBER	AMP	PHASE	VOLTAGE	HEIGHT	WIDTH	DEPTH
FDC4	400	1	120/240	79"	66"	20"
FDC6	600	1	120/240	79"	66"	20"
FDC8	800	1	120/240	86"	72"	20"
FDC10	1000	1	120/240	86"	86"	20"
FDC4-3	400	3	347/600*	86"	86"	20"
FDC6-3	600	3	347/600*	86"	86"	20"
FDC8-3	800	3	347/600*	86"	86"	20"
FDC10-3	1000	3	347/600*	86"	86"	20"

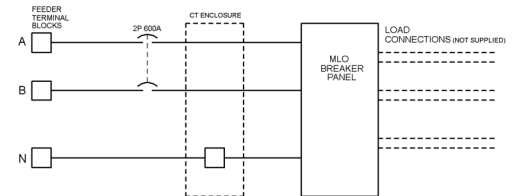
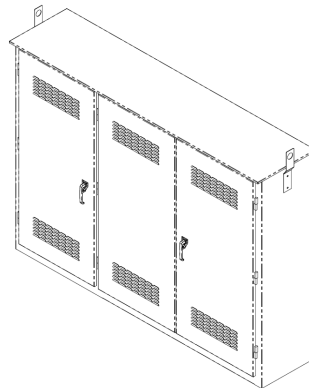
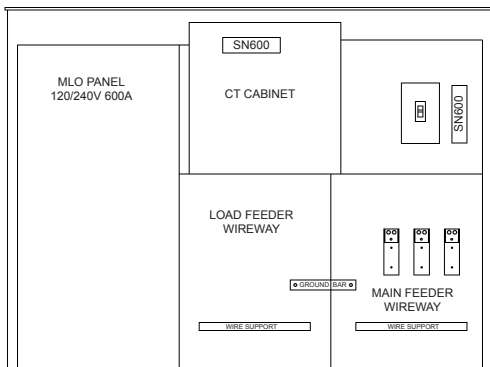
* Also approved for use with 120/208V

Farm Distribution Center

FDC



Typical FDC6 Configuration



Typical FDC6 with MLO Breaker Panel Option