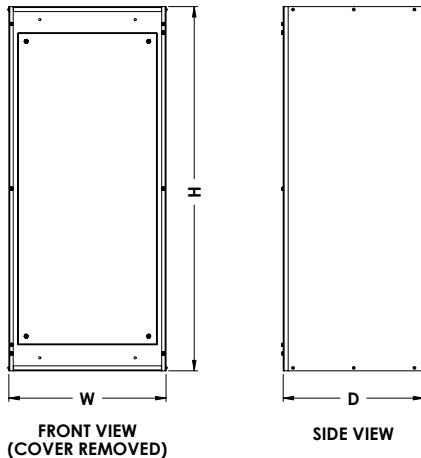
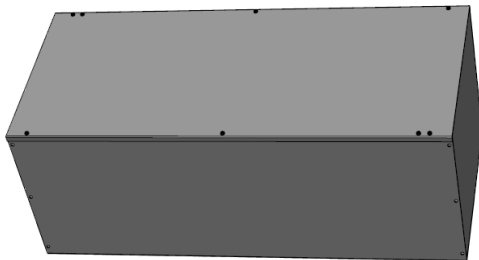




## CURRENT TRANSFORMER CABINETS

### CTC

CT cabinets are used to meter single phase and three phase services where the CT's are not included within the meter base. These boxes are manufactured with either galvanized steel or aluminum and come with sealing screws, backpan for mounting CT's and internal mounting holes.



#### Features/Specifications

- Galvanized steel or aluminum construction
- CSA Type 1 rated
- Designed to BC Hydro distribution standards
- Screw on cover
- Sealing screws
- Backpan
- Internal mounting holes

PART NUMBER	HEIGHT	WIDTH	DEPTH	MATERIAL	SINGLE PHASE SERVICE	THREE PHASE SERVICE
CTCG30-16-8	30"	16"	8"	GALVANIZED STEEL	UP TO 400A	UP TO 400A & BELOW 300V
CTCA30-16-8	30"	16"	8"	ALUMINUM	UP TO 400A	UP TO 400A & BELOW 300V
CTCG42-18-16	42"	18"	16"	GALVANIZED STEEL	OVER 400A	OVER 400A TO 800A
CTCA42-18-16	42"	18"	16"	ALUMINUM	OVER 400A	OVER 400A TO 800A
CTCG42-36-24	42"	36"	24"	GALVANIZED STEEL	NOT USED	OVER 800A
CTCA42-36-24	42"	36"	24"	ALUMINUM	NOT USED	OVER 800A