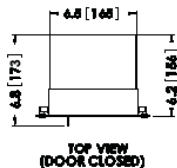
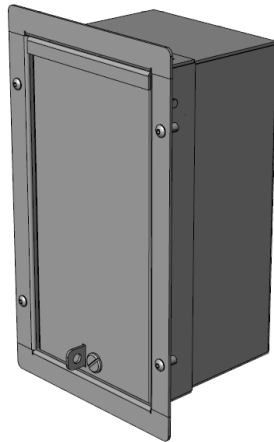




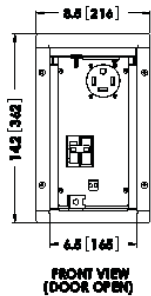
CAST-IN-PLACE WALL MOUNT DISTRIBUTION CABINET

CIPW

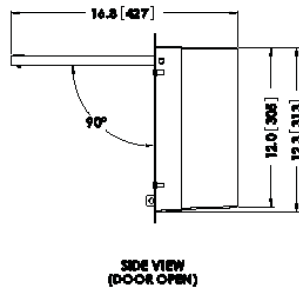
This cast-in-place box is used in applications for installation in concrete walls where power, distribution and controls are required in an aesthetically appealing environment. The flush-mount design enables safe, clean installation and the lockout tab ensures additional security.



TOP VIEW
(DOOR CLOSED)



FRONT VIEW
(DOOR OPEN)



SIDE VIEW
(DOOR OPEN)

Features/Specifications

- Aluminum construction
- CSA Type 3R rated
- Cast-in-place design
- Used for wall mounting
- Flush-mount design
- Flip door design with tooled entry style latch
- Breaker protected outlet
- Power distribution lugs for loop feeders
- Detailed installation instructions included
- 120/240V single phase
- 10kAIC rated

Options

- Multiple receptacle configurations
- Padlock tad
- Flasher controls
- Up to 22kAIC rated breakers
- Alternate latch types

PART NUMBER	HEIGHT	WIDTH	DEPTH	MATERIAL	MAIN BREAKER	RECEPTACLE
CIPW115	14"	6.5"	6.25"	ALUMINUM	1-15A 1P	1-15A GFI DUPLEX
CIPW215	14"	6.5"	6.25"	ALUMINUM	2-15A 1P	2-15A GFI DUPLEX
CIPW315	14"	6.5"	6.25"	ALUMINUM	3-15A 1P	3-15A GFI DUPLEX
CIPW120	14"	6.5"	6.25"	ALUMINUM	1-20A 1P	1-20A GFI DUPLEX
CIPW220	14"	6.5"	6.25"	ALUMINUM	2-20A 1P	2-20A GFI DUPLEX
CIPW320	14"	6.5"	6.25"	ALUMINUM	3-20A 1P	3-20A GFI DUPLEX
CIPW130	14"	6.5"	6.25"	ALUMINUM	1-30A 2P	1-30A 120/240V
CIPW150	14"	6.5"	6.25"	ALUMINUM	1-50A 2P	1-50A 120/240V